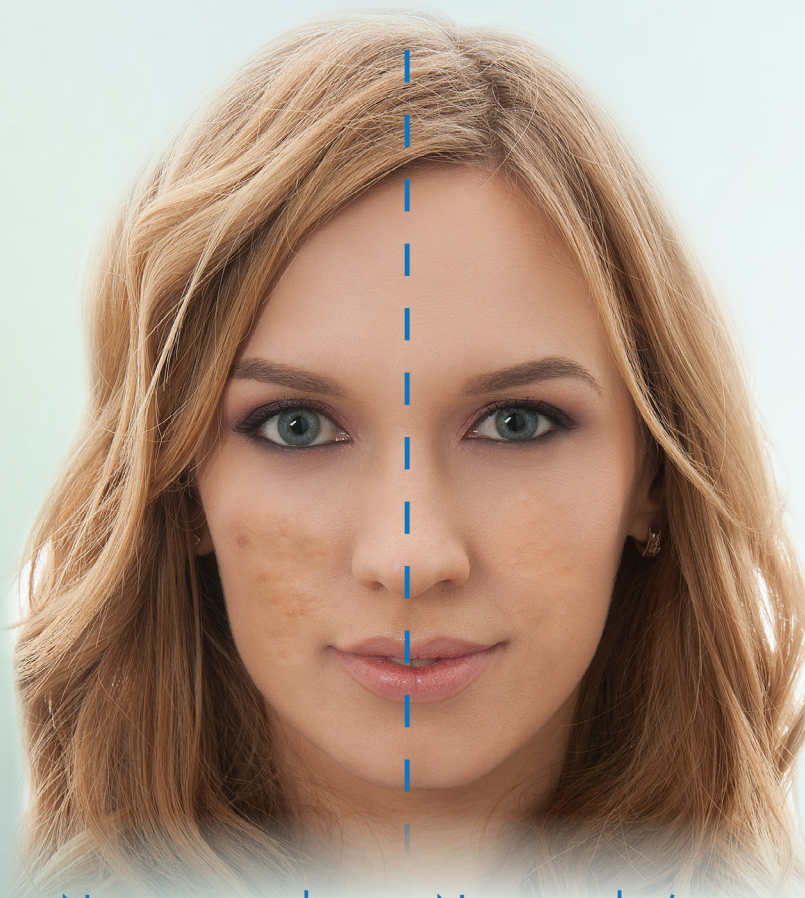


Don't "Just live with it"

Fill in acne scars with Bellafill®



Now you see them. Now you don't.



IMPORTANT SAFETY INFORMATION

Bellafill® is indicated for the correction of nasolabial folds and moderate to severe, atrophic, distensible facial acne scars on the cheek in patients over the age of 21 years. Patients who have had a positive reaction to the Bellafill® Skin Test, have a history of severe allergies, have known bovine collagen allergies, are allergic to lidocaine, have bleeding disorders or are prone to thick scar formation and/or excessive scarring should not receive Bellafill®. The safety of Bellafill® for use during pregnancy, breastfeeding, or in patients under 21 has not been established. You may experience temporary swelling, redness, pain, bruising, lumps/bumps, itching, and discoloration at the treatment site. These side effects are usually transient and typically resolve within 1–7 days. You may experience lumps/bumps/papules that may occur more than one month after injection and that may persist. Less common side effects include rash and itching more than 48 hours after treatment, persistent swelling or redness, lumps/bumps, acne, and increased sensitivity at treatment sites. Infrequently, granulomas may occur and may be treated by your licensed physician provider. Be sure to call your licensed provider immediately if you notice any unusual skin reactions around the treatment area. Based on the 5-year Post Approval Study with 1008 patients, long-term safety of Bellafill® for up to 5-years has been established. For more safety information, please consult with your physician and the patient labeling that can be found by visiting our website www.bellafill.com.

Toll-free call (U.S. & Canada): 844-Bellafill (844-235-5234).

Local calls: 858-550-9999. International calls: ++ 858-550-9999.

Reference: 1. Goltfried Lempere, et. al., ArteFill® Permanent Injectable for Soft Tissue Augmentation: I. Mechanism of Action and Injection Techniques., Aesthetic Plast Surg. 2010 Jun;34(3):264–72.

* Proposed mechanism of action.

Injectable Bellafill® adds volume below the scar to lift it to the level of surrounding skin for the smoother skin you've dreamed of. The PMMA (polymethylmethacrylate) re-creates the firm structure of smoother looking skin by supporting production of your body's own collagen—for lasting results.^{1*}

bellafill®

Bellafill® is approved for the correction of moderate to severe, atrophic, distensible facial acne scars on the cheek in patients over the age of 21 years.

Donato A. Viggiano, MD, PA
1901 SE Port St. Lucie Blvd.
Port St. Lucie, FL 34952
www.drvgiggiano.com
772-222-3105

SUNEVA®
MEDICAL

©SUNEVA MEDICAL, INC. SM1780REV02